

A veterinarian in a blue surgical gown and mask is performing an eye procedure on a pet in an operating room. The veterinarian is wearing a surgical cap and mask, and is focused on the patient. The background shows medical equipment and a bright operating room environment.

VETERINARY REVISION

Ophthalmology for pets in West Hartford

Fees & Services

APPOINTMENTS

*Save \$20 on exam fees when you schedule online

Initial Consultation

A comprehensive ophthalmic evaluation for your pet's first visit with us. Includes slit-lamp biomicroscopy, indirect ophthalmoscopy, tonometry, Schirmer tear testing, fluorescein dye application and interpretation, and neuro-ophthalmic evaluation

Medical Progress Evaluation

A follow-up evaluation to monitor your pet's condition after our initial consultation. Includes slit-lamp biomicroscopy, indirect ophthalmoscopy, and neuro-ophthalmic evaluation. Additional testing like tonometry, Schirmer tear testing, fluorescein dye application and interpretation, not included

Urgent Care Examination

For new or existing patients, we prioritize your pet's care on short-notice by performing evaluation during lunch or after-hours

\$380



\$170



\$500

DIAGNOSTICS



Schirmer Tear Testing

Evaluation of tear production

\$60

Tonometry

Measurement of intraocular pressure

\$80

Fluorescein Dye Application

May be used to assess corneal injuries, tear film, and nasolacrimal duct function

\$60

Nasolacrimal Duct Flushing

Diagnostic and therapeutic flushing of the nasolacrimal system to assess or establish patency

\$150

Ocular Ultrasonography

May be used to assess intraocular structures in cases of severe opacifications. Commonly used to screen for intraocular tumors and retinal detachments

\$300



EYELID

Surgical Eyelid Mass Removal

Wedge or pentagonal excision of mass involving less than 30% of eyelid. Performed under general anesthesia. Histopathology included

\$3250



Partial Eyelid Mass Removal & Cryotherapy

Debulking and cryotherapy of eyelid mass. Usually performed under sedation. *Select cases only*

\$1350

Entropion Correction

Permanent correction of eyelid position and/or length to properly align eyelid margins. Includes one or both eyes

\$3500-4000

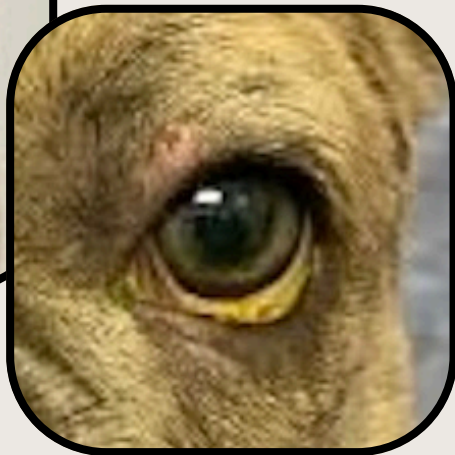
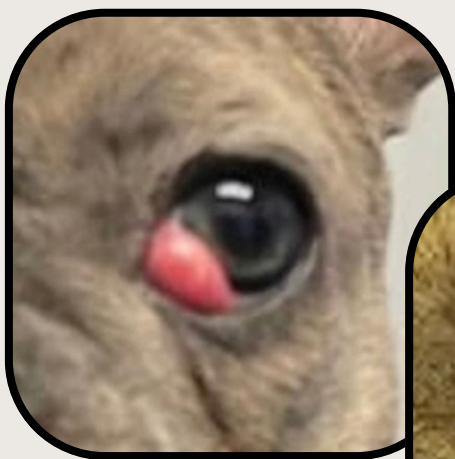


Cryotherapy for Distichia

Destruction of distichia hair follicles to prevent or relieve ocular surface irritation from offending hairs. Includes 2-4 eyelids

\$2500-3500

THIRD EYELID



Cherry Eye Correction

Permanent repositioning of prolapsed third eyelid gland. May include combination of techniques to maximize success rate

\$3500

Everted Cartilage Correction

Resection of kinked third eyelid cartilage with re-apposition and/or straightening of third eyelid

\$3000

Third Eyelid Removal

Removal of third eyelid, most commonly in cases of tumors

\$3000



Bruno

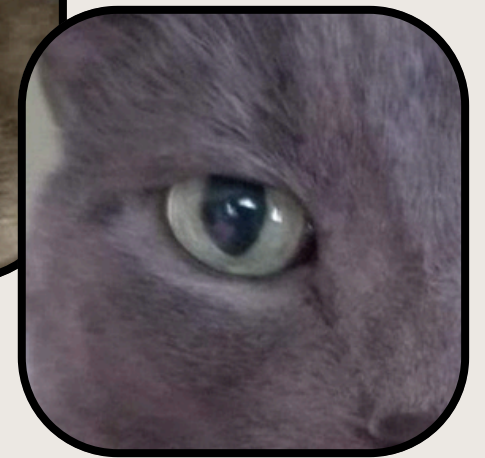
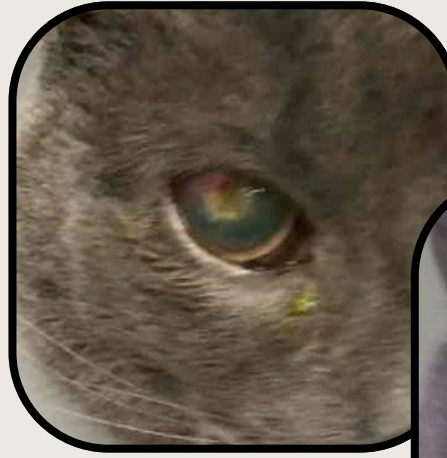


CORNEA

Grid Keratotomy/Diamond Burr Polishing

Superficial debridment of non-healing corneal ulcerations to facilitate timely healing. 85% success within 2 weeks. May require sedation

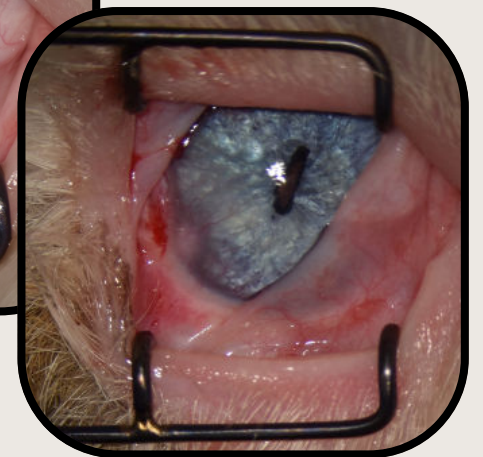
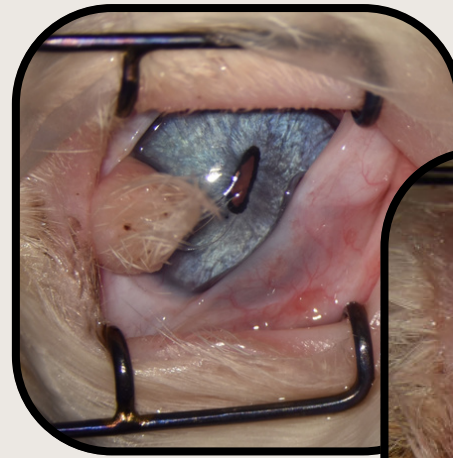
\$1200



Lamellar Keratectomy

Resection of superficial layer(s) of cornea in cases of corneal sequestra, non-healing corneal ulcers, or dermoid

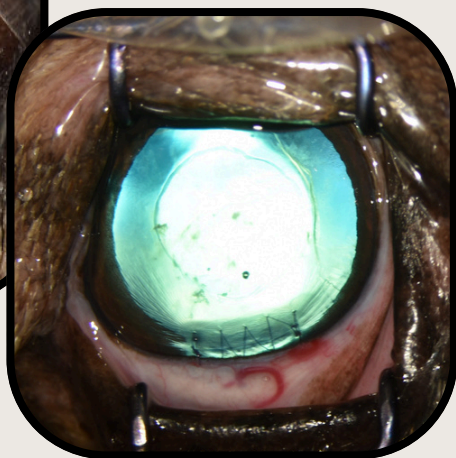
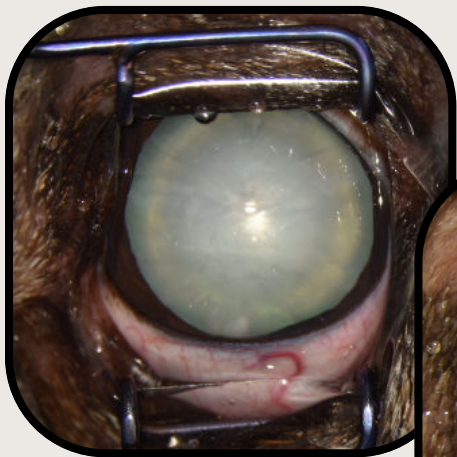
\$3200



Corneal Reconstruction

Tissue grafting of the corneal surface in cases of deep ulcers, infection, and/or perforation

\$3900



Rosie

LENS

Cataract Extraction (unilateral)

Modern phacoemulsification technique to remove cataract and place artificial lens. Includes 2 post-operative evaluations

\$4500

Cataract Extraction (bilateral)

Modern phacoemulsification technique to remove cataract and place artificial lens. Includes 2 post-operative evaluations

\$6000-6750

Intracapsular Lens Extraction

Removal of luxated lens, which is often an emergency. Includes 2 post-operative evaluations

\$4000



GLOBE

Enucleation

Surgical eye removal. Often reserved as a last resort for blind and potentially painful eyes. Common reasons include refractory glaucoma, intraocular tumors, and large corneal perforations

\$3500



Evisceration with Intrascleral Silicone Prosthesis

Replacement of the intraocular contents with a dark silicone ball to allow patients with refractory glaucoma to retain the outer structure of their eye

\$3750

Ciliary Body Chemical Ablation

Intraocular injection that permanently reduces intraocular pressure in 75% of dogs with refractory primary glaucoma. May be considered in some cases of secondary glaucoma

\$1200



Proptosis Replacement

Surgical replacement of traumatic proptosis of the eye

\$3000

VETERINARY REVISION
Ophthalmology for pets in West Hartford